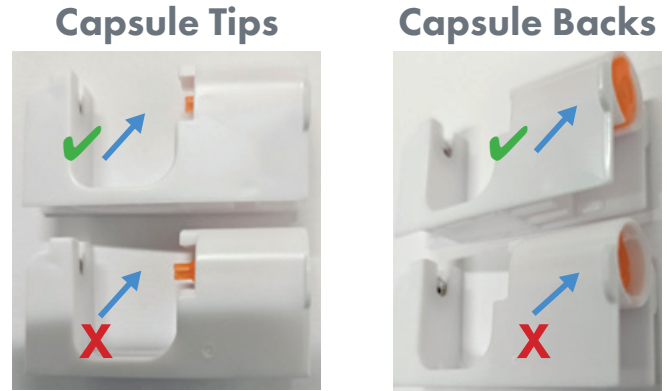


Best Practices for Accurate Piercing

1. Check Your Capsule

To ensure an accurate piercing, check your capsule for proper alignment. A properly aligned capsule means the capsule tip is not protruding and the capsule back is flush with the cartridge. The images to the right show **proper** ✓ and **improper** ✗ alignment of the capsule tip and back.

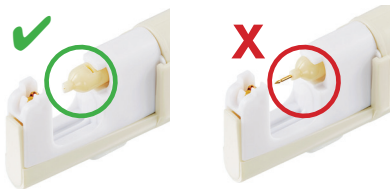


Look at your capsule before loading it in the instrument. If it is not properly aligned, follow the steps below to correct it. Please note that these steps must be followed precisely to maintain the sterility of the piercing earring.



1. While wearing a new pair of clean disposable gloves, cover the tip of the cartridge where the capsule protrudes with a new alcohol towelette.
2. Cover the back of the cartridge with a second alcohol towelette.
3. Gently push the capsule back until it is properly aligned as shown in the images above.

2. Aim Using the Capsule Tip, Not the Earring Post



Pushing the earring post out of the capsule prior to piercing can cause the earring to go off course and can cause a missed piercing. Aim at the piercing placement dot with the extended end of the inner capsule only. Do NOT push the tip of the earring out of the capsule until you are ready to pierce the ear.

3. Check the Style Number on Your Cassette

Be sure that the item number on your cassette matches the style your customer has chosen. If possible, visually confirm that you have the correct style in the cassette by checking the back of the capsule as shown in the picture on the right. *Note: piercing earring styles that require a spacer will not be visible through the cassette.*

